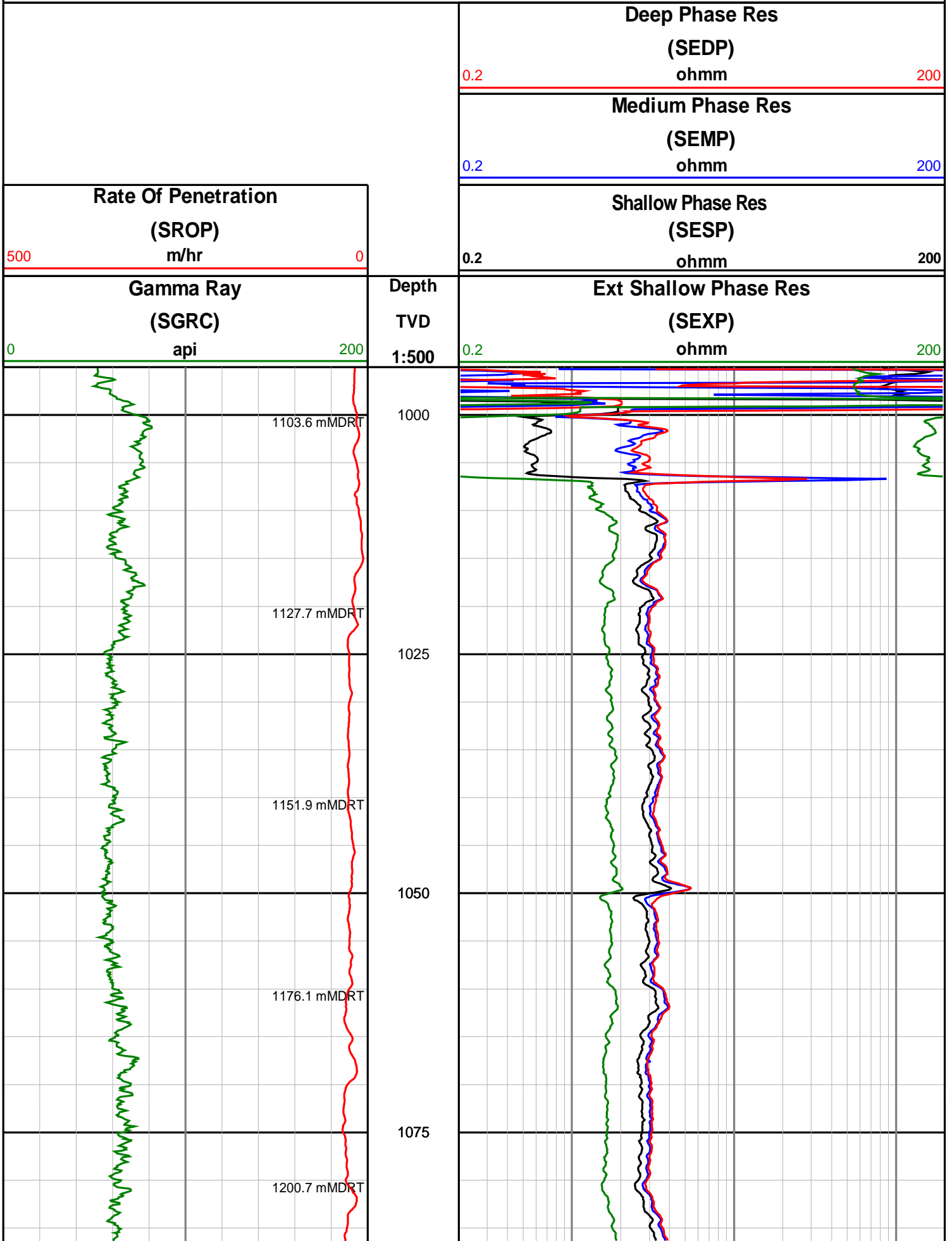
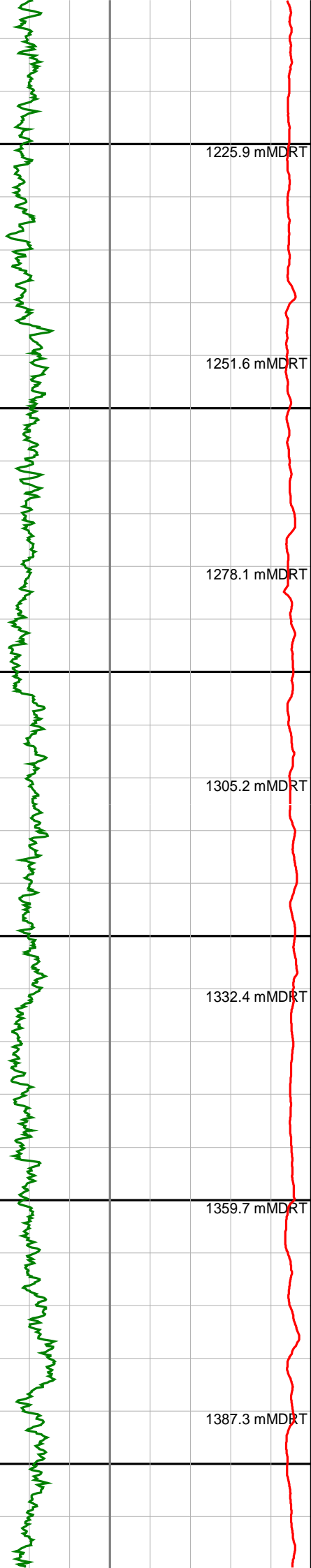


# Anzon Australia Ltd

## Basker-3

Recorded/Realtime LWD Log (Permanent Datum - LAT)





1100

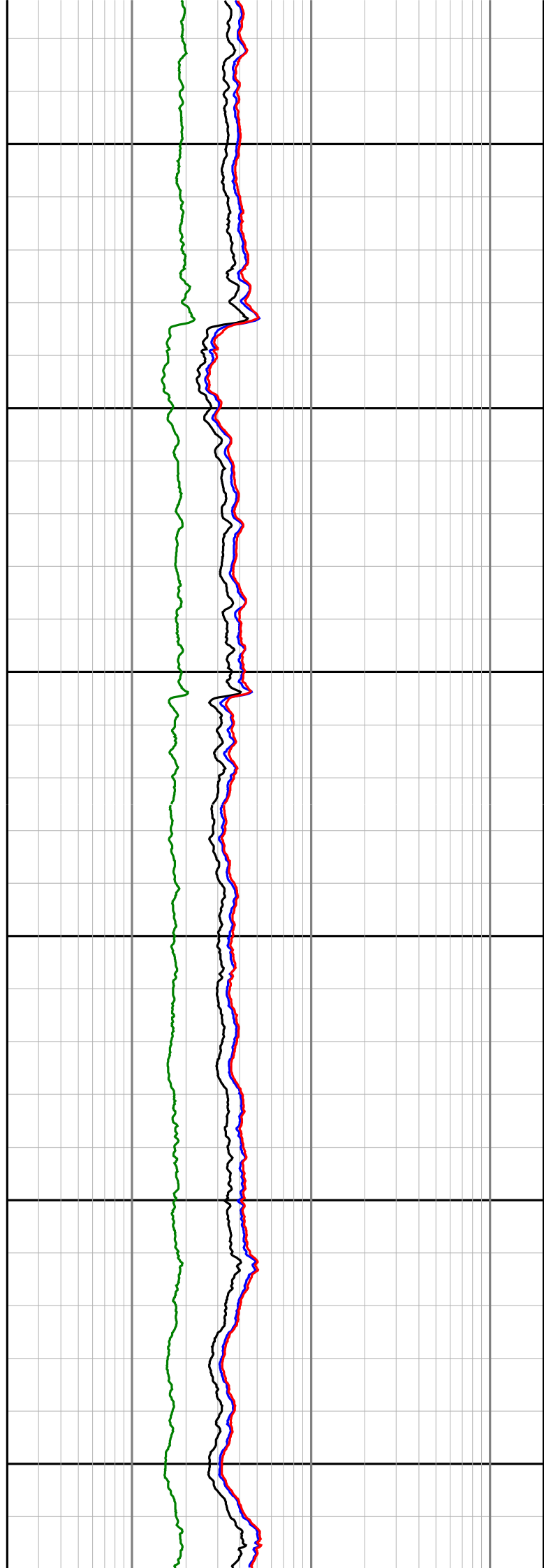
1125

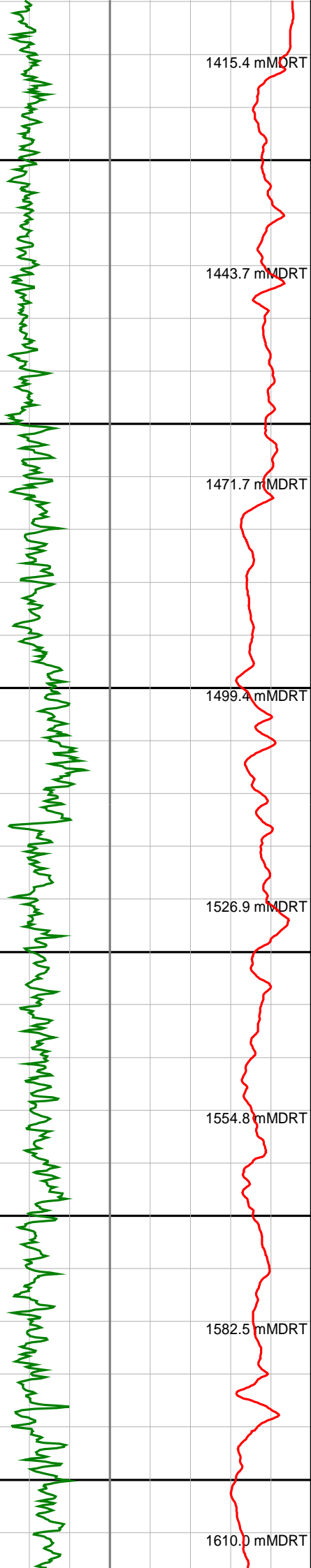
1150

1175

1200

1225





1250

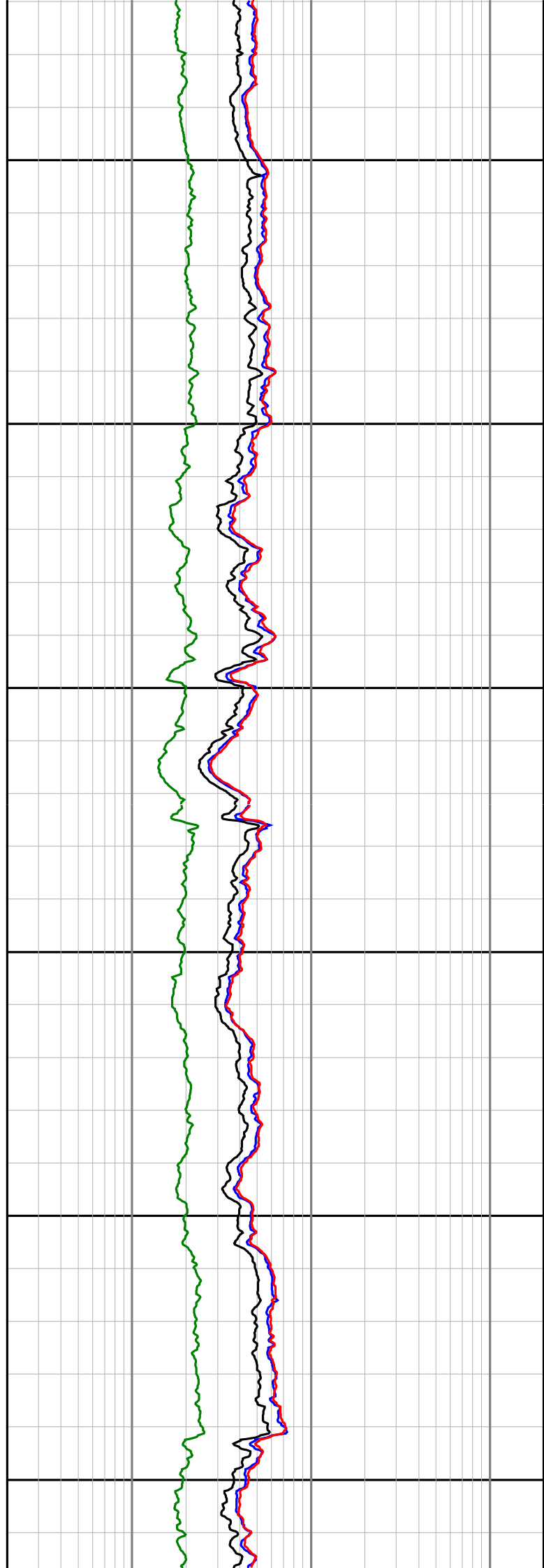
1275

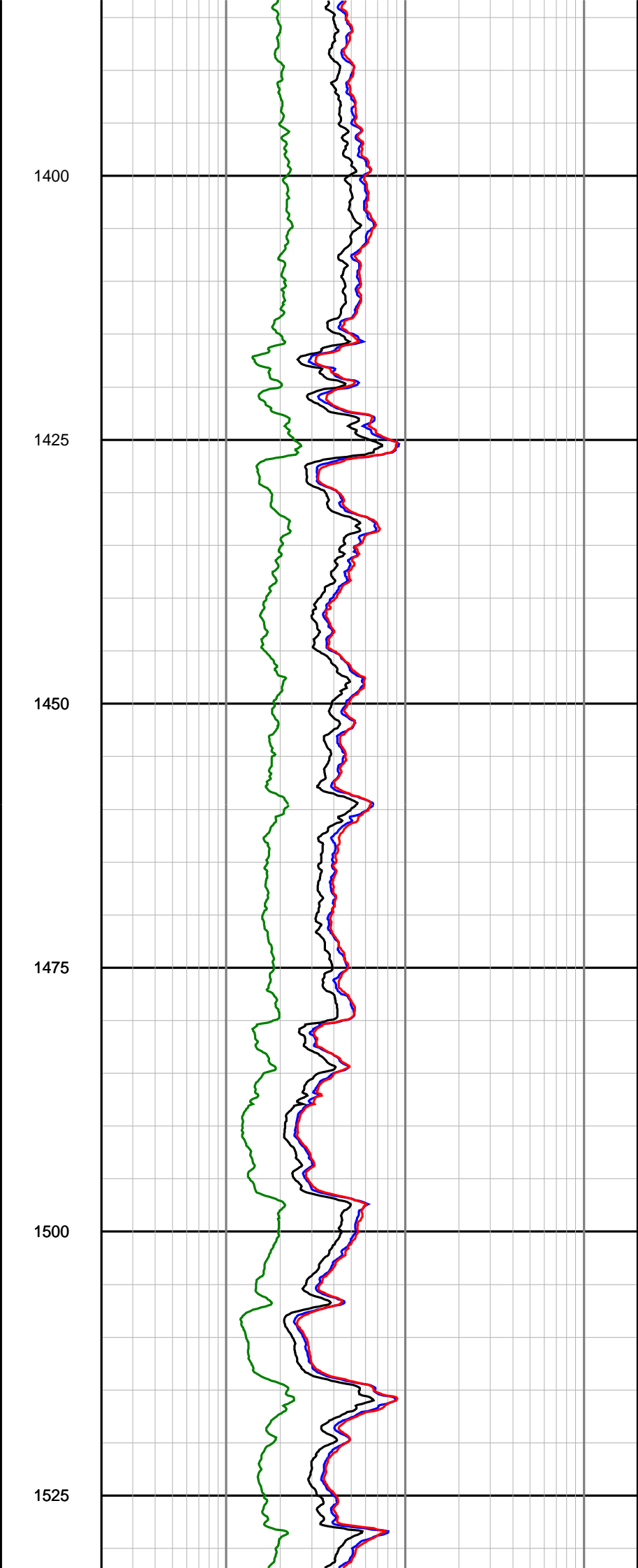
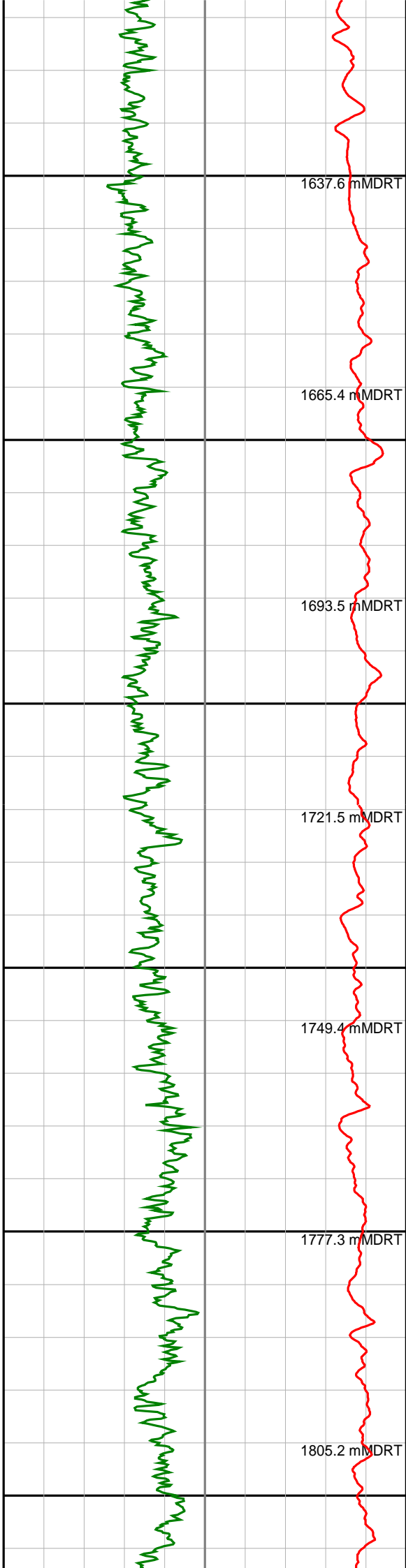
1300

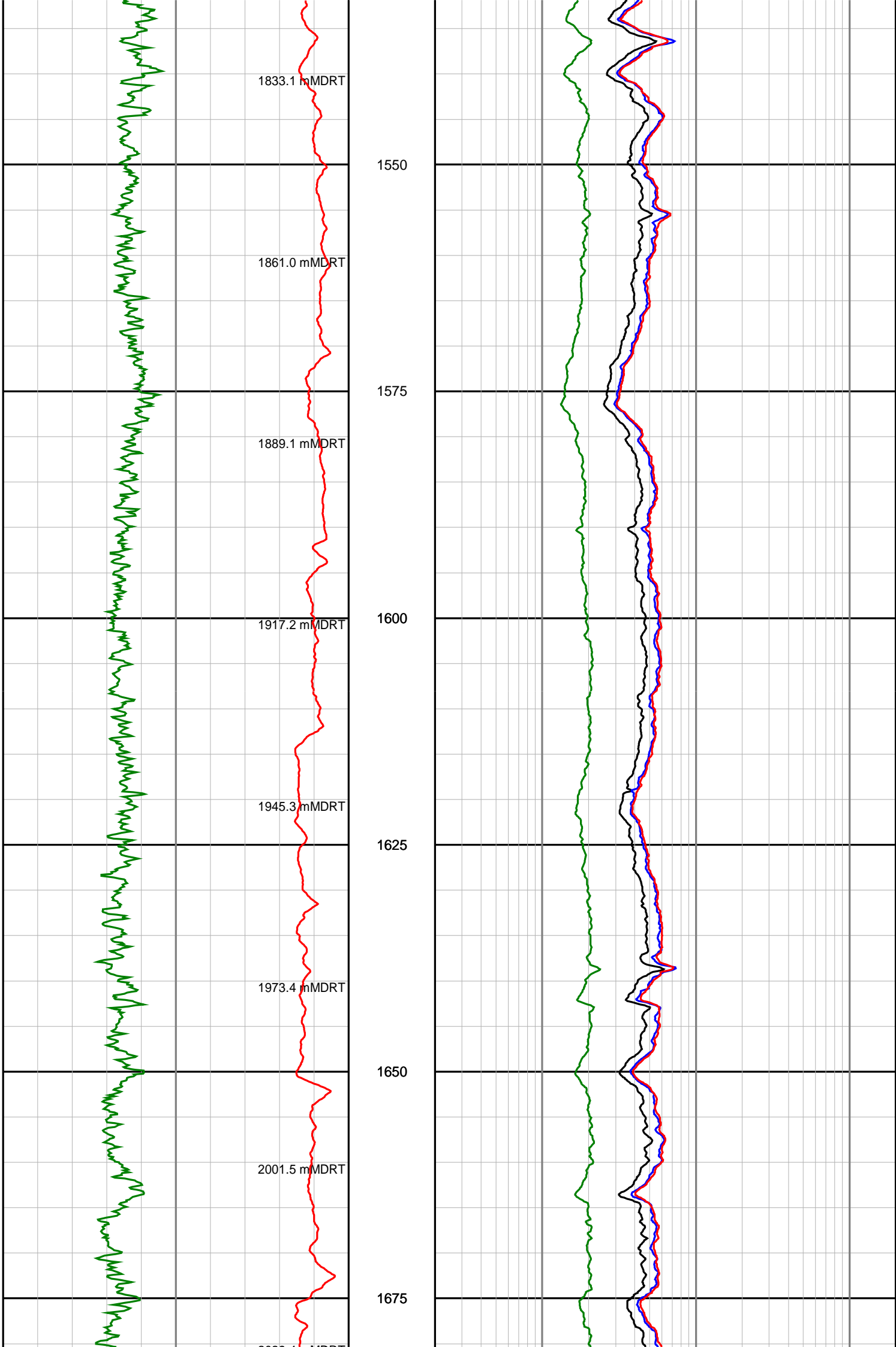
1325

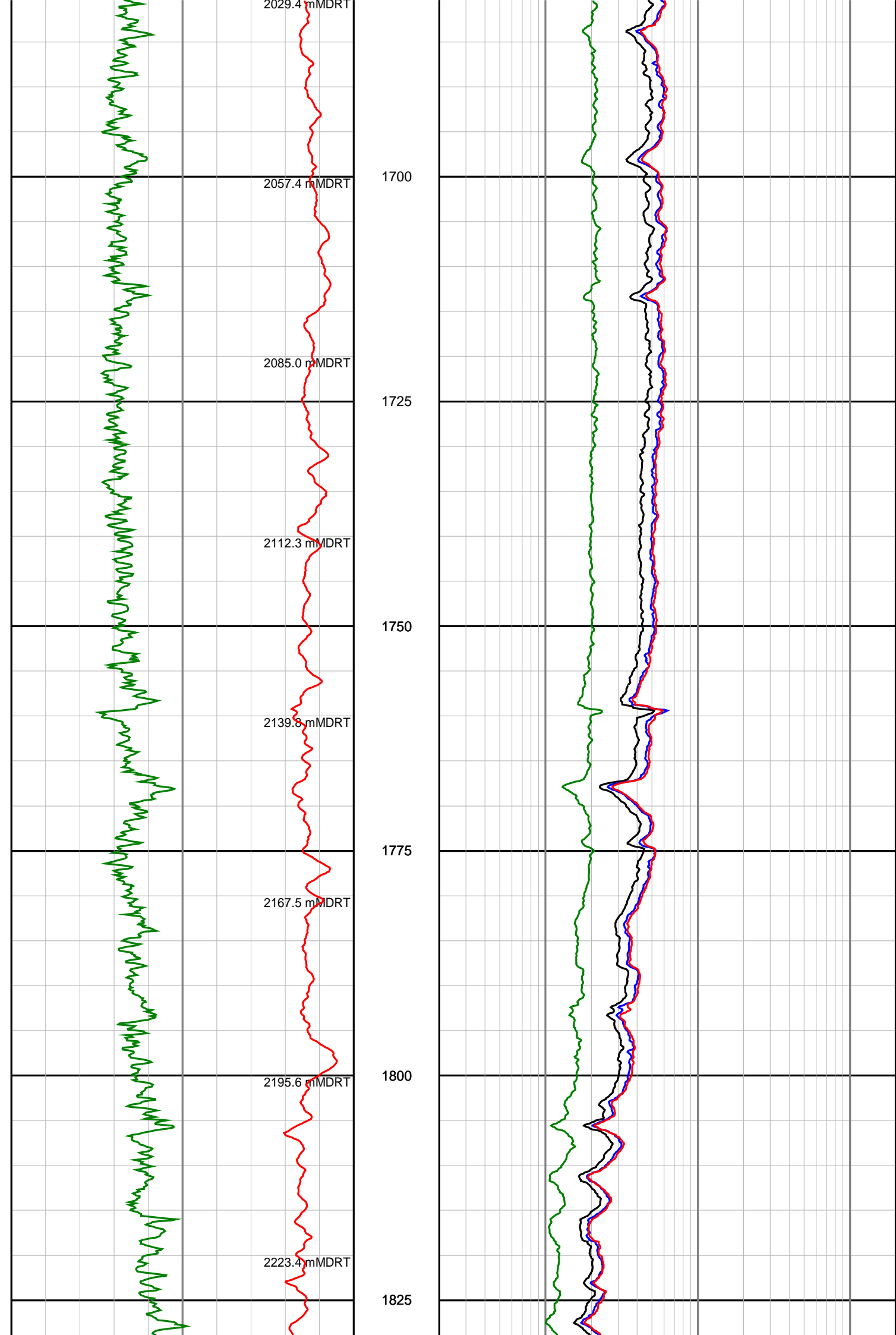
1350

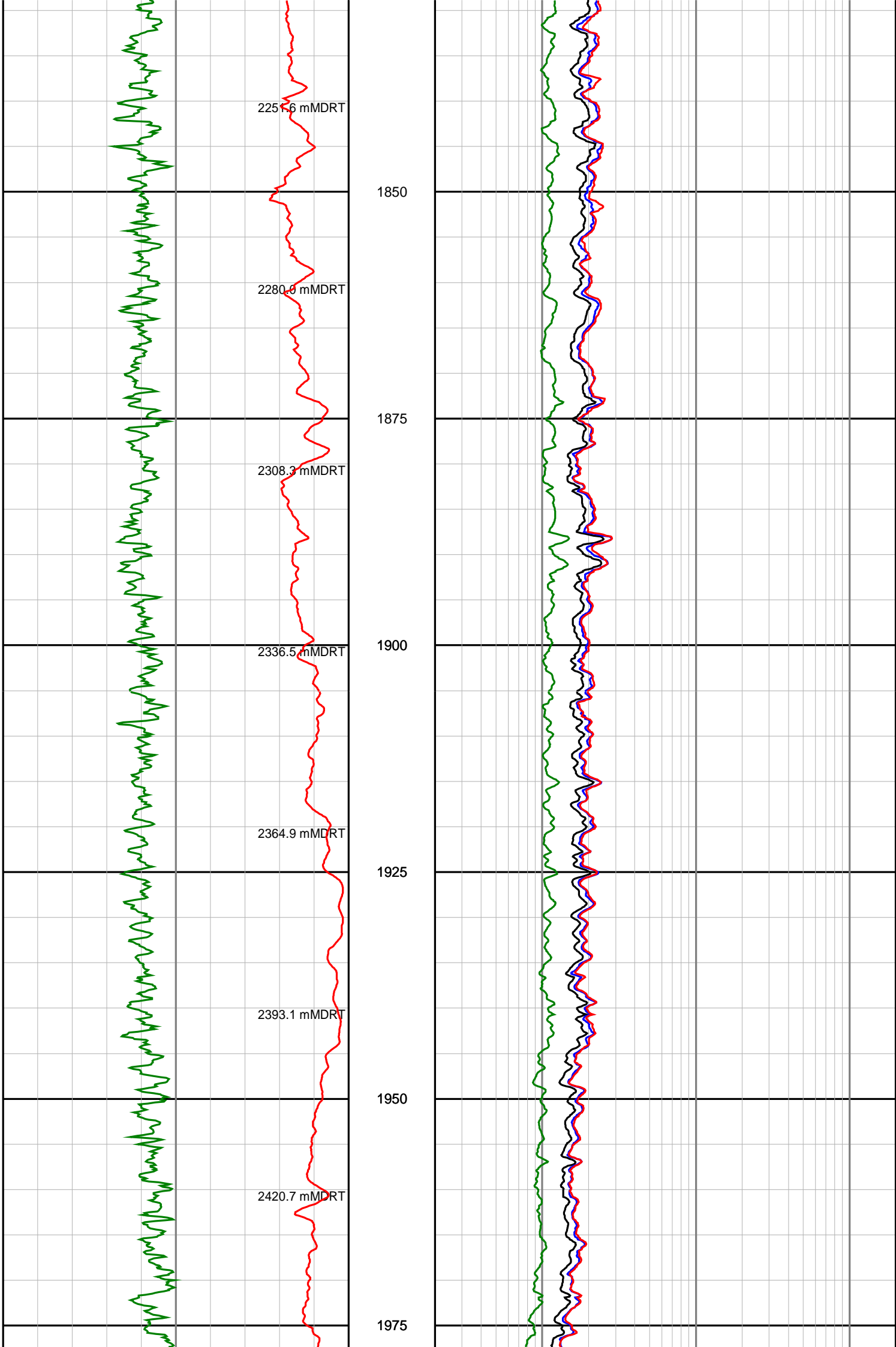
1375

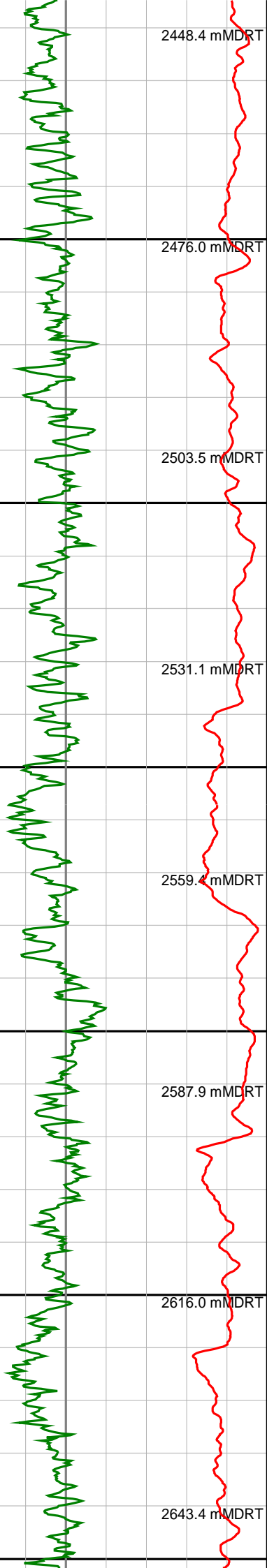












2000

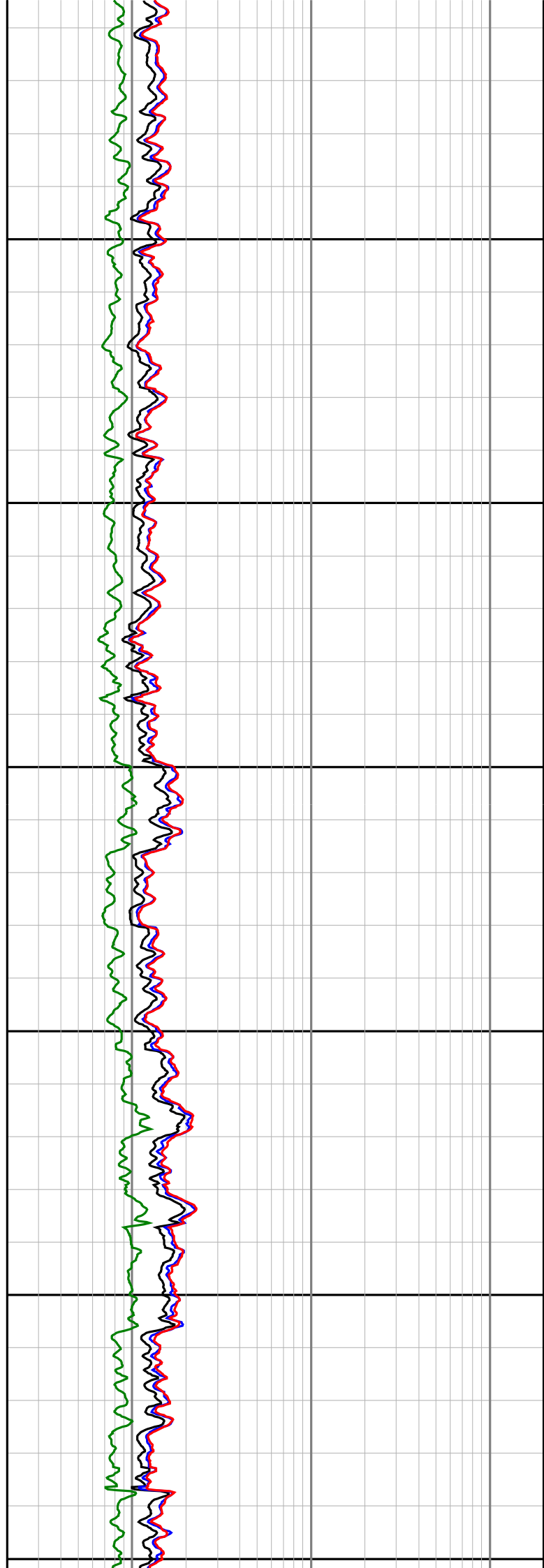
2025

2050

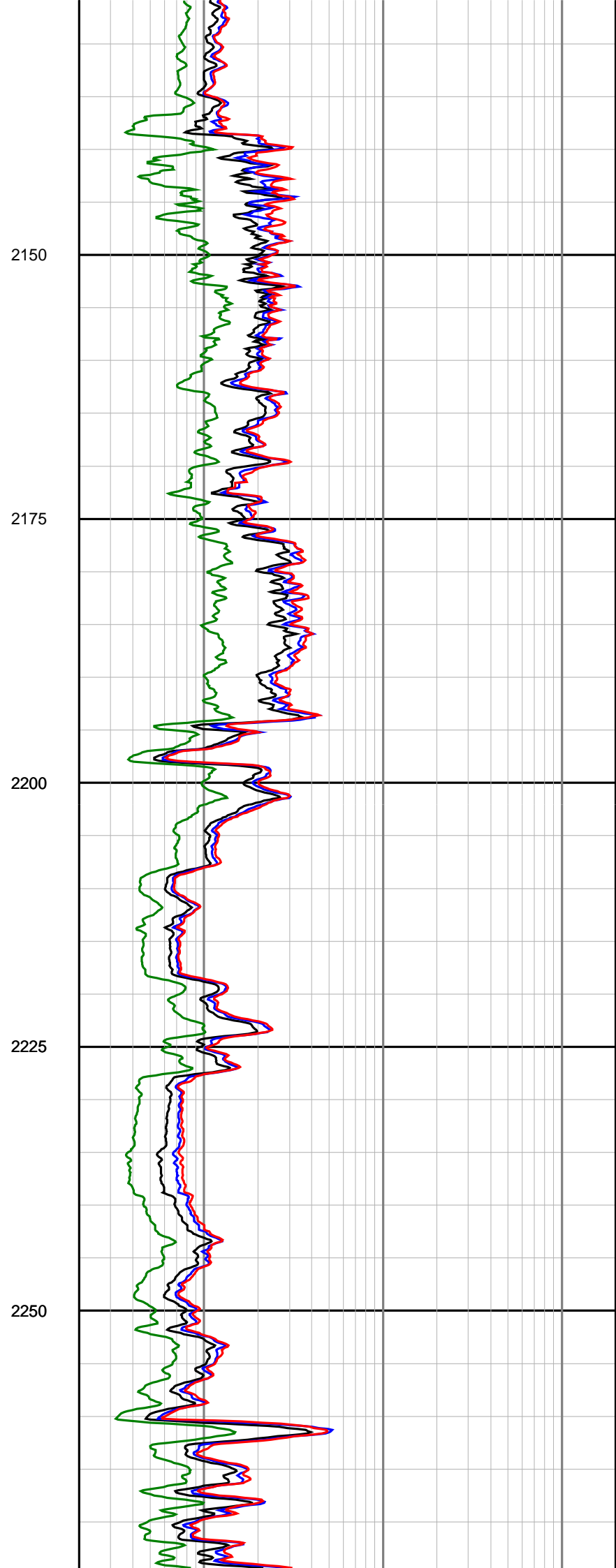
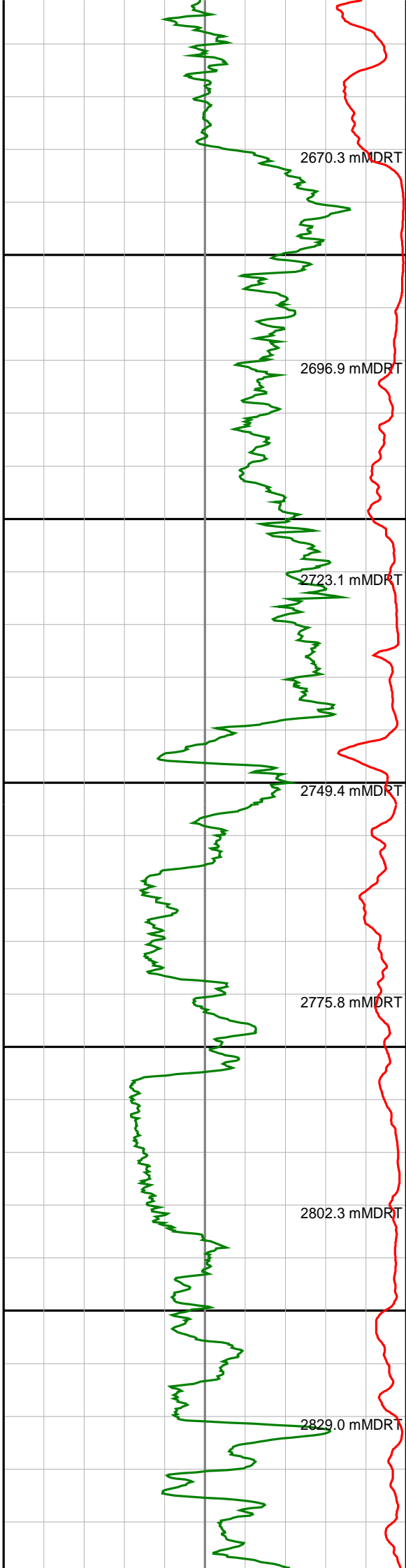
2075

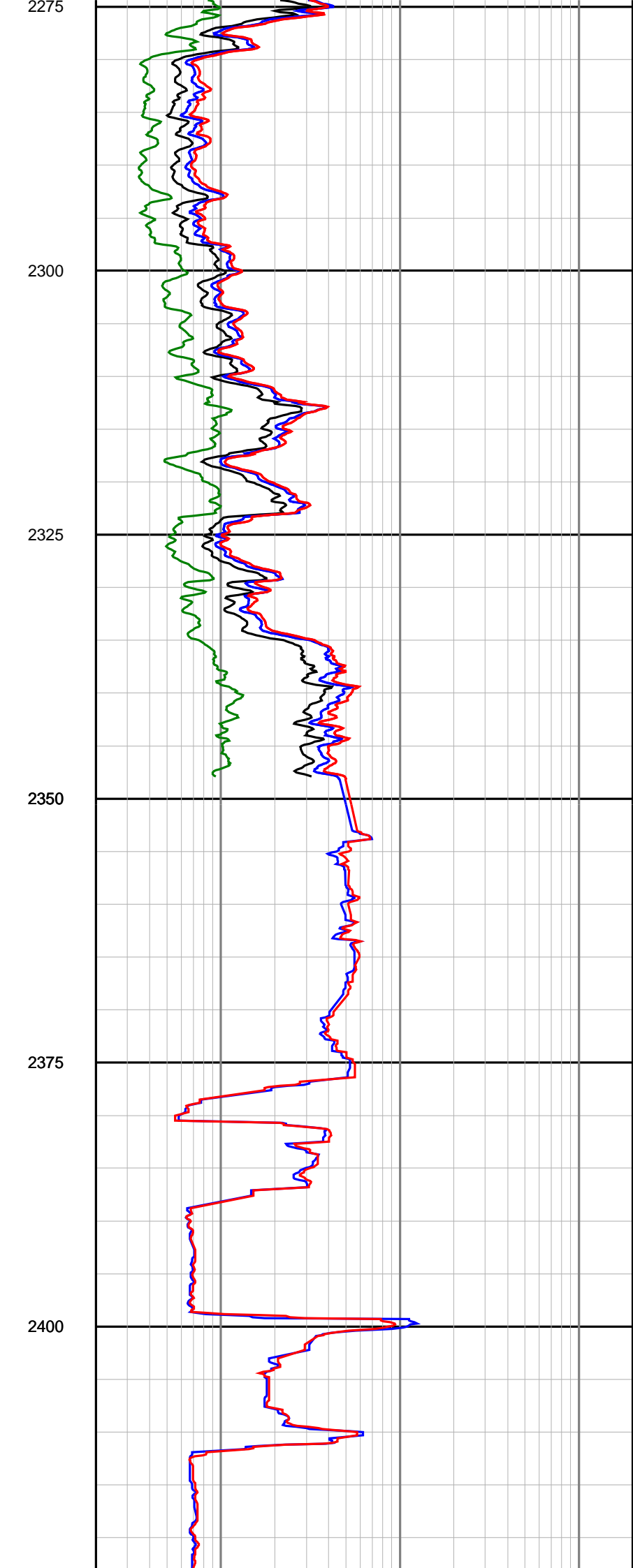
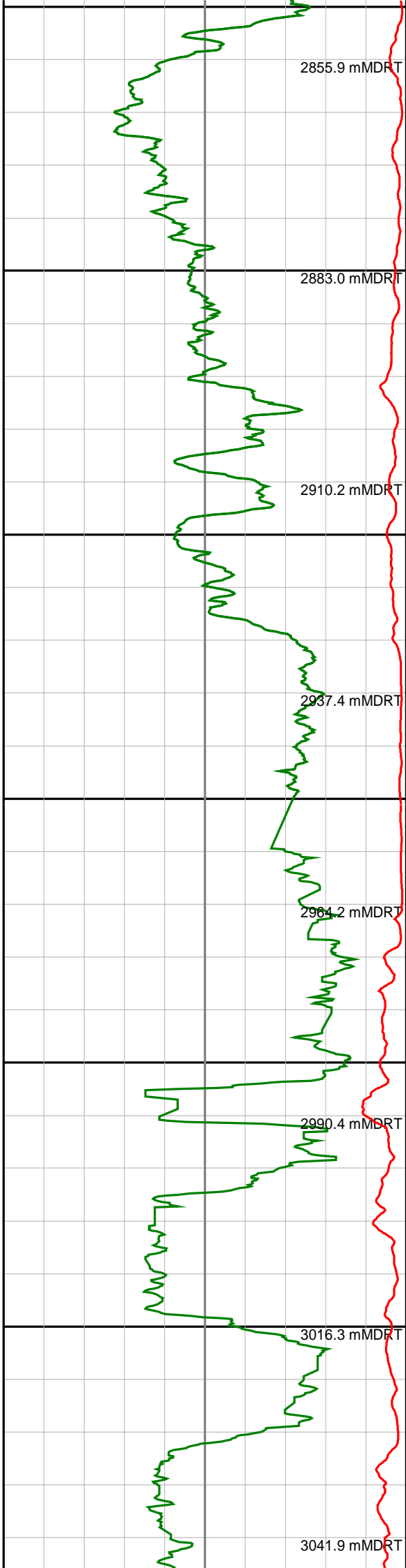
2100

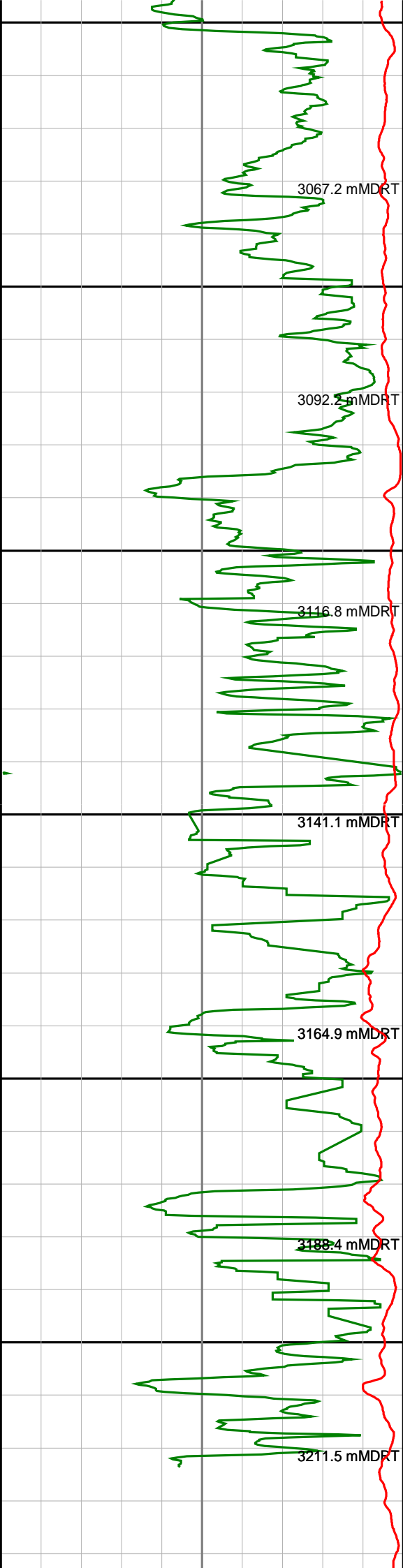
2125











2425

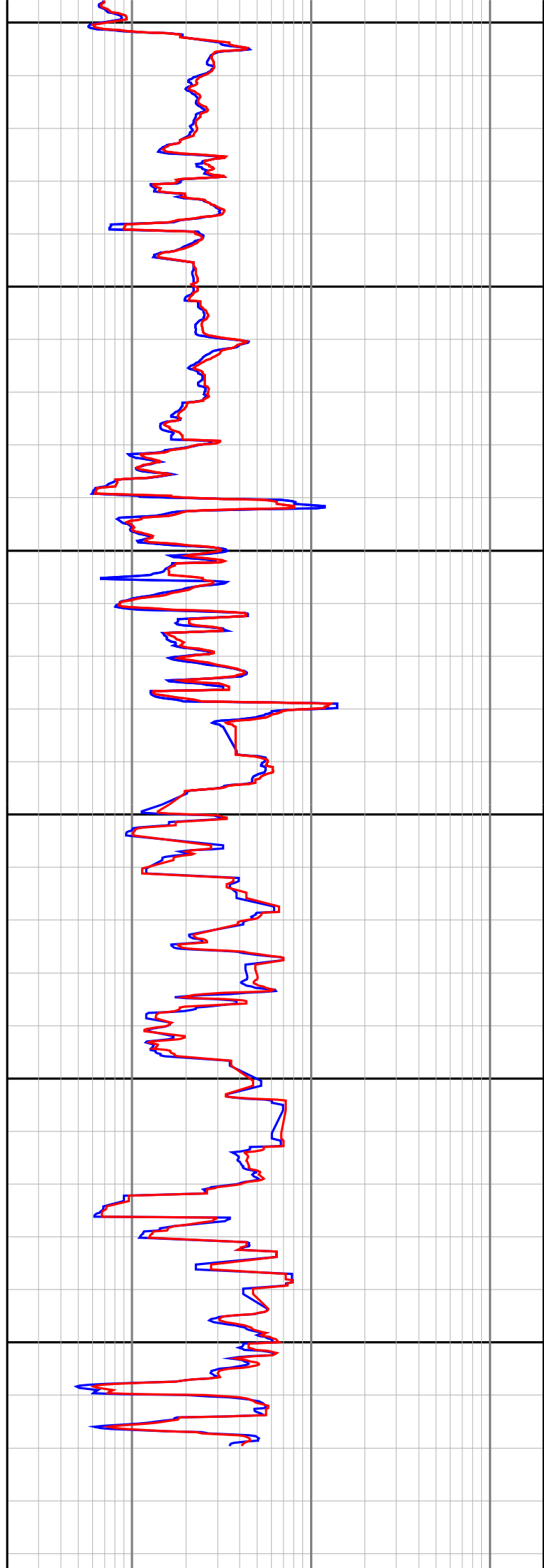
2450

2475

2500

2525

2550



|  |  |  |
|--|--|--|
|  | 0575   |  |
| <p align="center"><b>Gamma Ray<br/>(SGRC)</b></p> <p align="center">api</p>            | <p align="center"><b>Depth</b></p> <p align="center">TVD</p> <p align="center">1:500</p> | <p align="center"><b>Ext Shallow Phase Res<br/>(SEXP)</b></p> <p align="center">ohmm</p> |
| <p align="center"><b>Rate Of Penetration<br/>(SROP)</b></p> <p align="center">m/hr</p> |  | <p align="center"><b>Shallow Phase Res<br/>(SESP)</b></p> <p align="center">ohmm</p>     |
|  |  | <p align="center"><b>Medium Phase Res<br/>(SEMP)</b></p> <p align="center">ohmm</p>      |
|  |  | <p align="center"><b>Deep Phase Res<br/>(SEDP)</b></p> <p align="center">ohmm</p>        |

0 200

0.2 200

500 0

0.2 200

0.2 200

0.2 200